

Health Impact Assessment at Phillips Mobile Home Park

Why Health Impact Assessment? HIA...

- ❖ Informs decision-making by identifying how a project or plan may unintentionally harm health;
- ❖ Suggests ways to maximize benefits and minimize/mitigate harm;
- ❖ Promotes health equity by shedding light on health disparities;
- ❖ Supports transparency, inclusiveness, and community engagement;
- ❖ Uses evidence-based strategies to analyze health issues most relevant to the group of people most directly impacted by the project being considered;
- ❖ Is systematic but flexible – follows 4-6 key steps to achieve these goals.

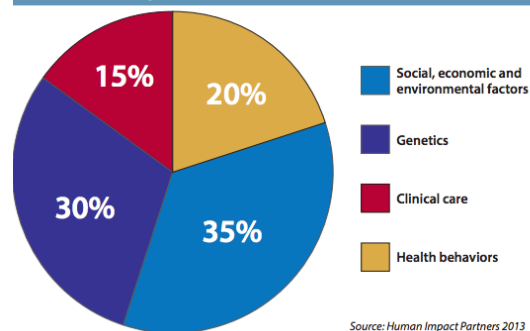
How do planning and the built environment impact health?

- ❖ This graphic illustrates how much our health depends not only on our individual genetics and behaviors, and the quality of health care we have access to, but also on social, economic, and environmental factors. The quality of our built environment effects and is effected by each of these factors.
- ❖ Land use planning shapes our built environment. The diagram below points out some of the built environment factors that impact health.

Factors that Impact Health

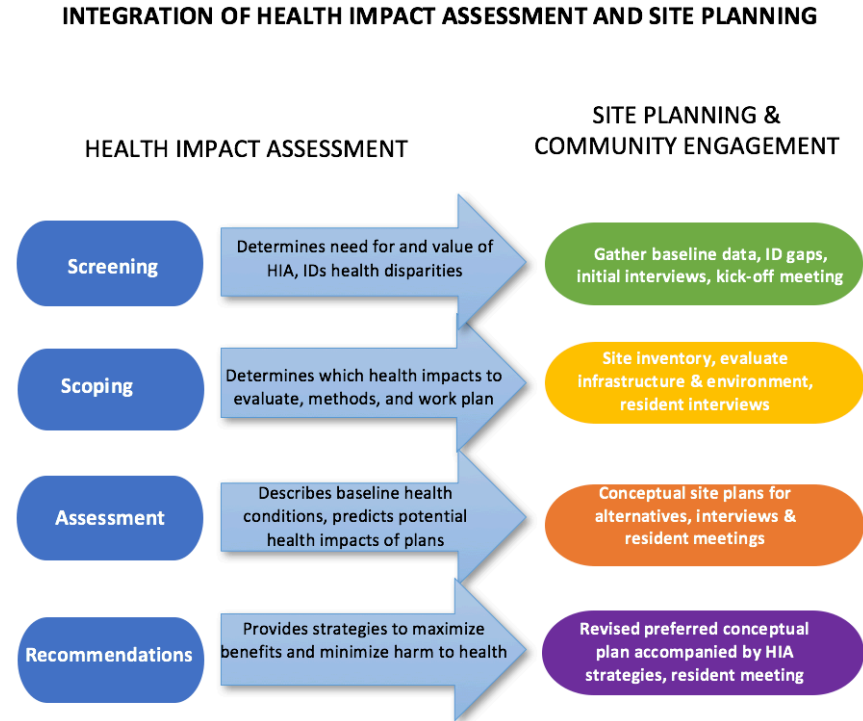
There are a variety of factors that shape health. Genetics and family health history only influence about 30 percent of a person's health. The rest is influenced by behaviors, as well as environmental and socio-economic conditions such as education, income, and access to health care. These factors are considered 'modifiable' because they can be changed.

FIGURE: Factors Influencing Health



What are the HIA steps and how do they relate to site planning at Phillips?

- ❖ HIA at Phillips is a 4-step process. The diagram below names and summarizes the steps, and illustrates how they are related to the steps of site planning and community engagement.



- ❖ The Phillips Mobile Home Park project is an affordable housing project; housing is identified as a key health priority in Pitkin County. HIA and site planning are integrated in this project to explore how Phillips can best support a healthful, affordable housing community into the future.

- ❖ HIAs of housing projects typically focus on housing community, quality, location, and affordability. During HIA Scoping, more specific “determinants of health” are selected as the focus for further study; these are the most important links between health and the potential impacts of the project. The graphic to the right summarizes the key determinants of health for Phillips.

Key Health Determinants for Phillips MHP

