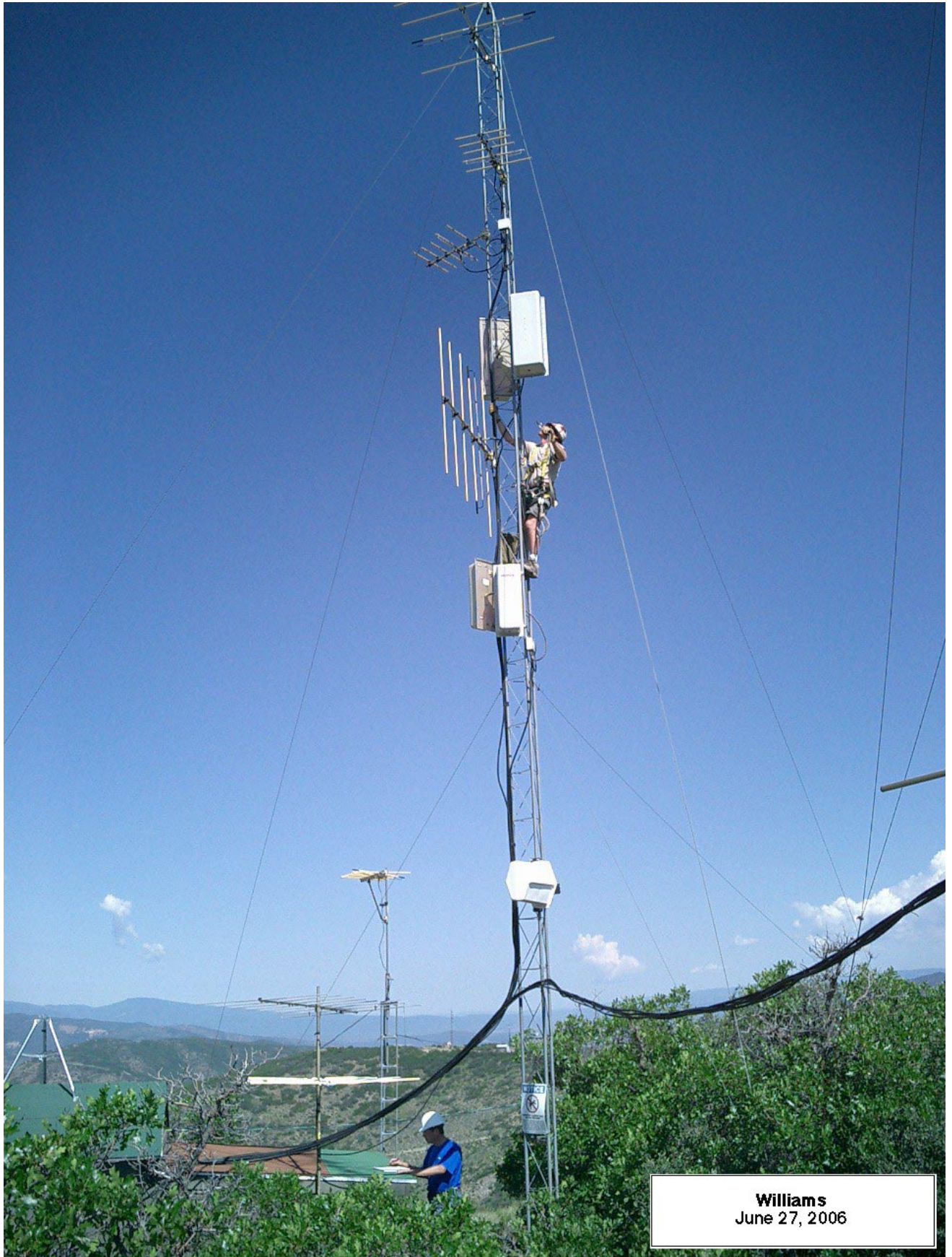
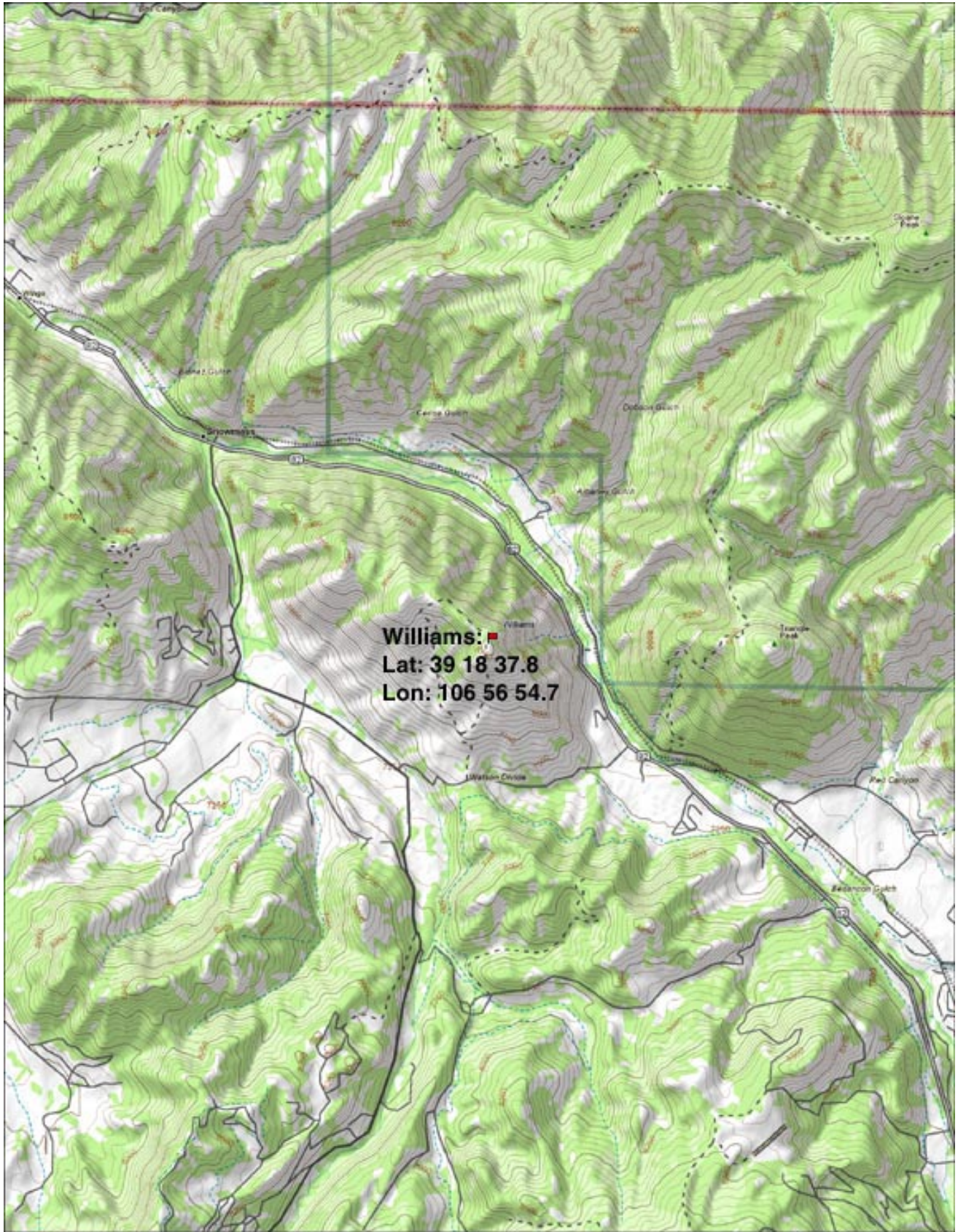


Appendix A.11 - Williams



Williams
June 27, 2006



Williams: ■
Lat: 39 18 37.8
Lon: 106 56 54.7



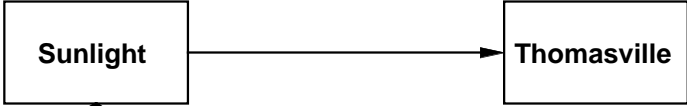
© 2002 DeLorme, Topo USA. All Data copyright of content owner.
www.delorme.com



Sunlight

Call Sign	Freq. in	Freq. out	Donor
K207DT (KDNK)	88.1	89.3	Sunlight
K240AB (KJYE)	92.3	95.9	Black Ridge
K265CS (KMGJ)	93.1	100.9	Black Ridge
K247AD (KSPN)	103.1	97.3	Lower Red
K235AN (KSNO)	103.9	94.9	NE of Snowmass Village
K232AD (KNFO)	106.1	94.3	Williams Broadcast Site

Red Hill



Thomasville

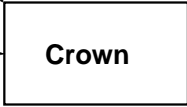
Call Sign	Freq. in	Freq. out.	Donor
K235AP (KDNK)	88.1	94.9	Sunlight
K215BC (KCJX)	88.9	90.9	Sunlight
K229AI (KVOV)	90.5	93.7	Sunlight
K246AH (KKCH)	92.7	97.1	Sunlight
K242AV (KNFO)	94.3	96.3	Sunlight Trans.
K251AK (KJYE)	95.9	98.1	Sunlight Trans. silent

Lower Red



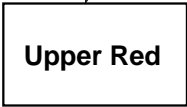
Elephant

Call Sign	Freq. in	Freq. out	Donor
K203EH (KDNK)	88.1	88.5	Sunlight
K215BD (KCJX)	88.9	90.9	Sunlight
K230AG (KVOV)	90.5	93.9	Sunlight
K236AN (KNFO)	94.3	95.1	Sunlight Trans.
K278BD (KSNO)	94.9	103.5	Sunlight Trans.
K272DB (KJYE)	95.9	102.3	Sunlight Trans.
K252CU (KSPN)	97.3	98.3	Sunlight Trans.



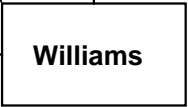
Crown

Call Sign	Freq. in	Freq. out	Donor
K211EX (KCJX)	88.9	90.1	Sunlight
K222AN (KVOV)	90.5	92.3	Sunlight
K203EG (KDNK)	94.7	88.5	Williams Trans.
K272AM (KJYE)	95.9	102.3	Sunlight Trans.
K261AK (KSPN)	103.1	100.1	Lower Red
K278AG (KSNO)	103.9	103.5	NE of Snowmass Village



Upper Red

Call Sign	Freq. in	Freq. out	Donor
K268BJ (KVOV)	90.5	101.5	Sunlight
K216BF (KAJX)	91.5	91.1	Smuggler Mt.
K210BO (KLXV)	91.9	89.9	Sunlight
K202AT (KDNK)	94.7	88.3	Williams Trans.
K274AT (KRVG)	95.5	102.7	Sunlight



Williams

Call Sign	Freq. in	Freq. out	Donor
K234BJ (KDNK)	88.1	94.7	Sunlight
K230AN (KVOV)	90.5	93.9	Sunlight
K209EY (KAJX)	91.5	89.7	Smuggler Mt.
K288FV (KJYE)	95.9	105.5	Sunlight Trans.



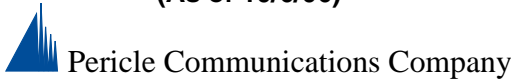
Jackrabbit

Call Sign	Freq. in	Freq. out.	Donor
K215AC (KAJX)	91.5	90.9	Smuggler Mt.

Loges

- Notes:**
1. Some signals are translated twice
 2. Loges and Red Hill are Inactive
 3. Lower Red is TV only
 4. Arrows indicate path between translators

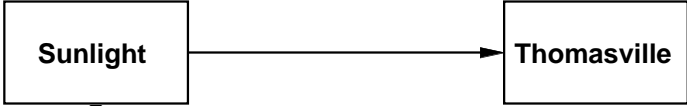
FM System Diagram
(As of 10/6/06)



Sunlight

Call Sign	Ch. in	Ch. out	Donor
K45HL (KJCT ABC)	8	45-	Grand Mesa
K58AA (KKCO NBC)	12-DT	58	Black Ridge
K31CW (KRMJ PBS)	49	31+	Sunlight
K29CK (KDVR FOX)	SAT	29z	Denver
K48IC (KREG CBS)	3	48+	Sunlight (direct feed via cable)

Red Hill



Thomasville

Call Sign	Ch. in	Ch. out	Donor
K05JA (KJCT ABC)	45-	5 N	Sunlight Trans.
K09LE (KKCO NBC)	58	9 N	Sunlight Trans.
K04PO (KRMJ PBS)	31+	4+	Sunlight Trans.
K11LM (KDVR FOX)	29	11z*	Sunlight Trans.
K07KF (KREG CBS)	48+	7N	Sunlight Trans.

*Changing from channel 14.

Upper Red



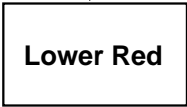
Elephant

Call Sign	Ch. in	Ch. out	Donor
K02IO (KJCT ABC)	45-	2z	Sunlight Trans.
K09XN (KKCO NBC)	58	9z	Sunlight Trans.
K04HP (KRMJ PBS)	31+	4z	Sunlight Trans.
K18GD (KDVR FOX)	29	18+	Sunlight Trans.
K11VC (KREG CBS)	48+	11z	Sunlight Trans.



Crown

Call Sign	Ch. in	Ch. out	Donor
K09AG (KJCT ABC)	45-	9z	Sunlight Trans.
K07KR (KKCO NBC)	58	7z	Sunlight Trans.
K36GX (KRMJ PBS)	31+	36z	Sunlight Trans.
K33HY (KDVR FOX)	29	33+	Sunlight Trans.
K05MB (KREG CBS)	48+	5z*	Sunlight Trans.



Lower Red

Call Sign	Ch. in	Ch. out	Donor
KO2HI (KJCT ABC)	45-	2z	Sunlight Trans.
K08HN (KKCO NBC)	58	8	Sunlight Trans.
K06HU (KRMJ PBS)	31+	6	Sunlight Trans.
K04HH (KREG CBS)	48+	4z	Sunlight Trans.
K19FH (cable 12 Grass Roots)	19		Microwave
K21HF (cable 11 CGTV)	21		Microwave



Williams

Call Sign	Ch. in	Ch. out	Donor
K07RN (KJCT ABC)	45-	7N	Sunlight Trans.
K13MT (KKCO NBC)	58	13	Sunlight Trans.
K11LW (KRMJ PBS)	31+	11N	Sunlight Trans.
K39HE (KDVR FOX)	29	39+	Sunlight Trans.
K50IN (KREG CBS)	48+	50-	Sunlight Trans.

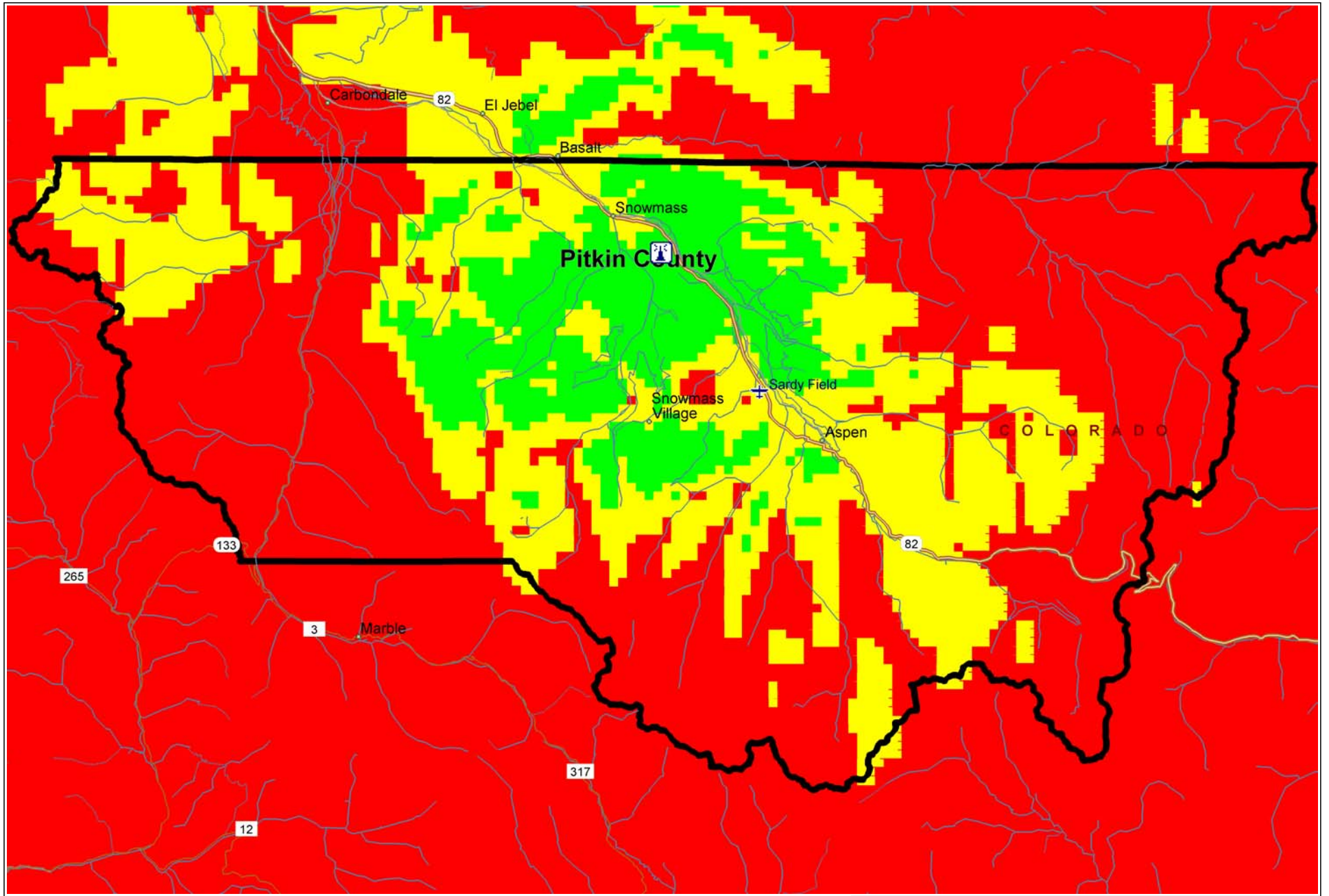
Jack Rabbit

Loges

- Notes:**
1. Most signals are translated twice
 2. Loges and Red Hill are Inactive
 3. Upper Red & Jack Rabbit are FM only
 4. Arrows indicate path between translators
 5. Red text indicates new, not yet constructed

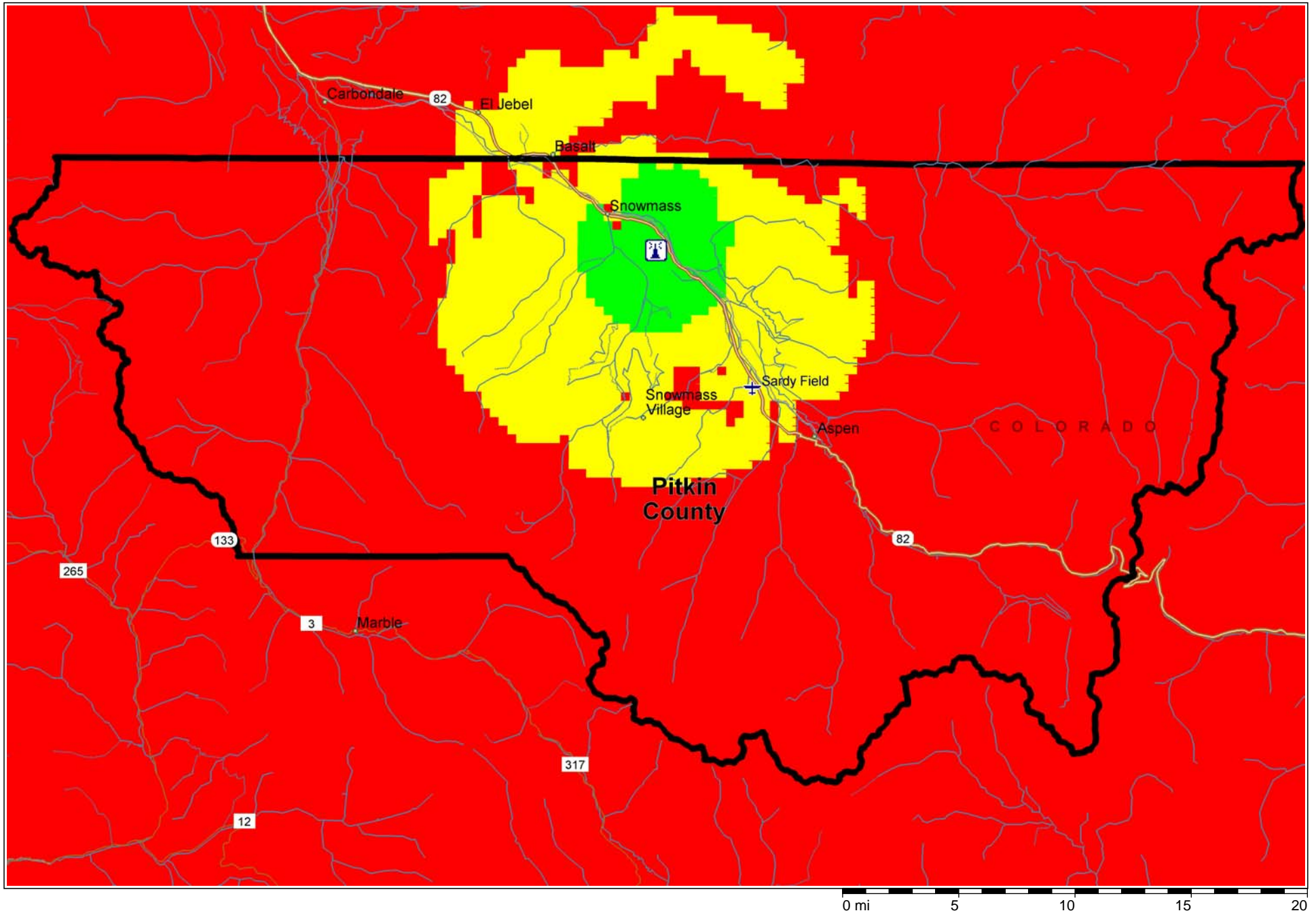
TV System Diagram
(As of 10/6/06)

Williams FM: 40, 50 dBu = Red, Yellow, Green

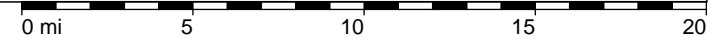
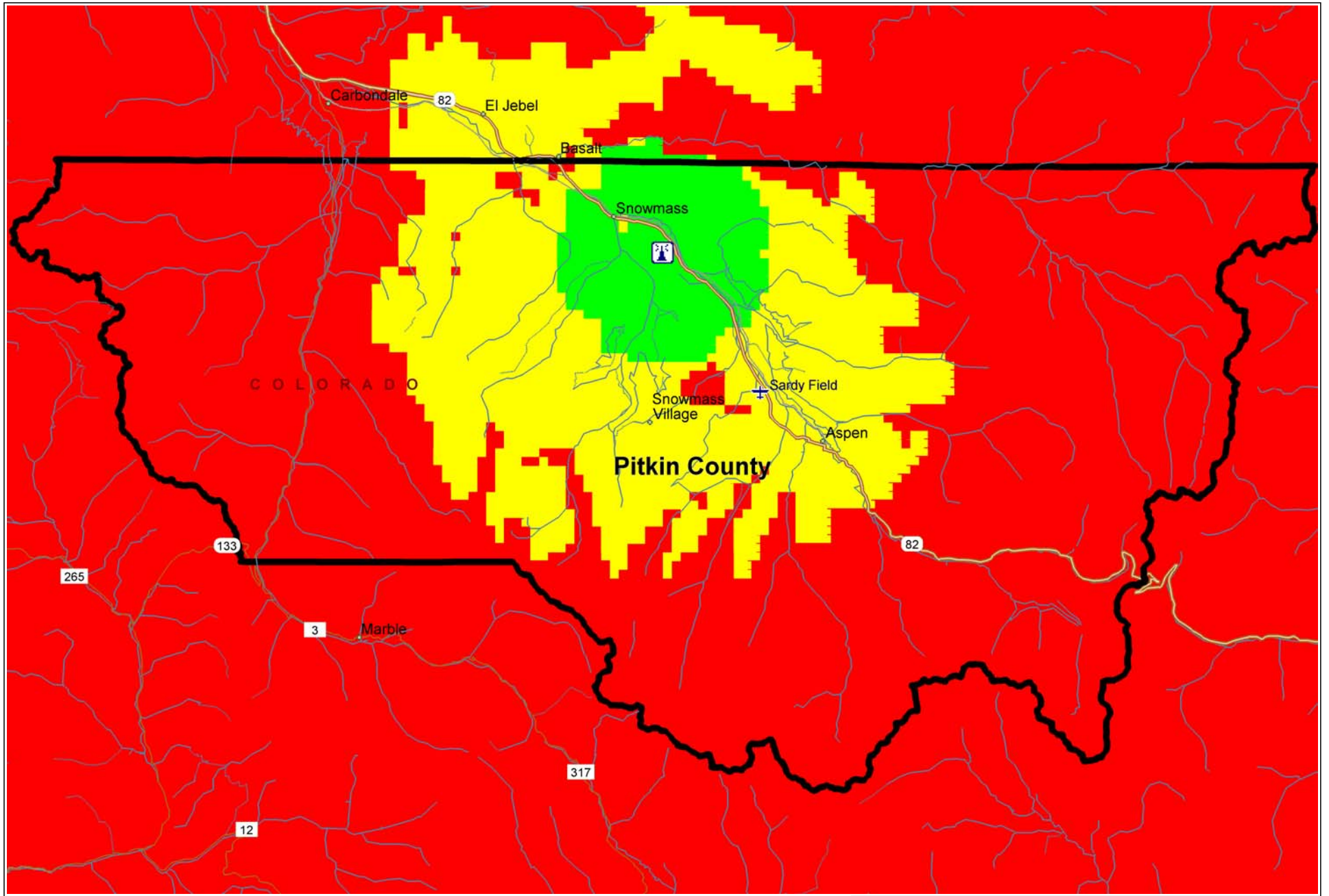


0 mi 5 10 15 20

Williams VHF-TV: 60, 70 dBu = Red, Yellow, Green



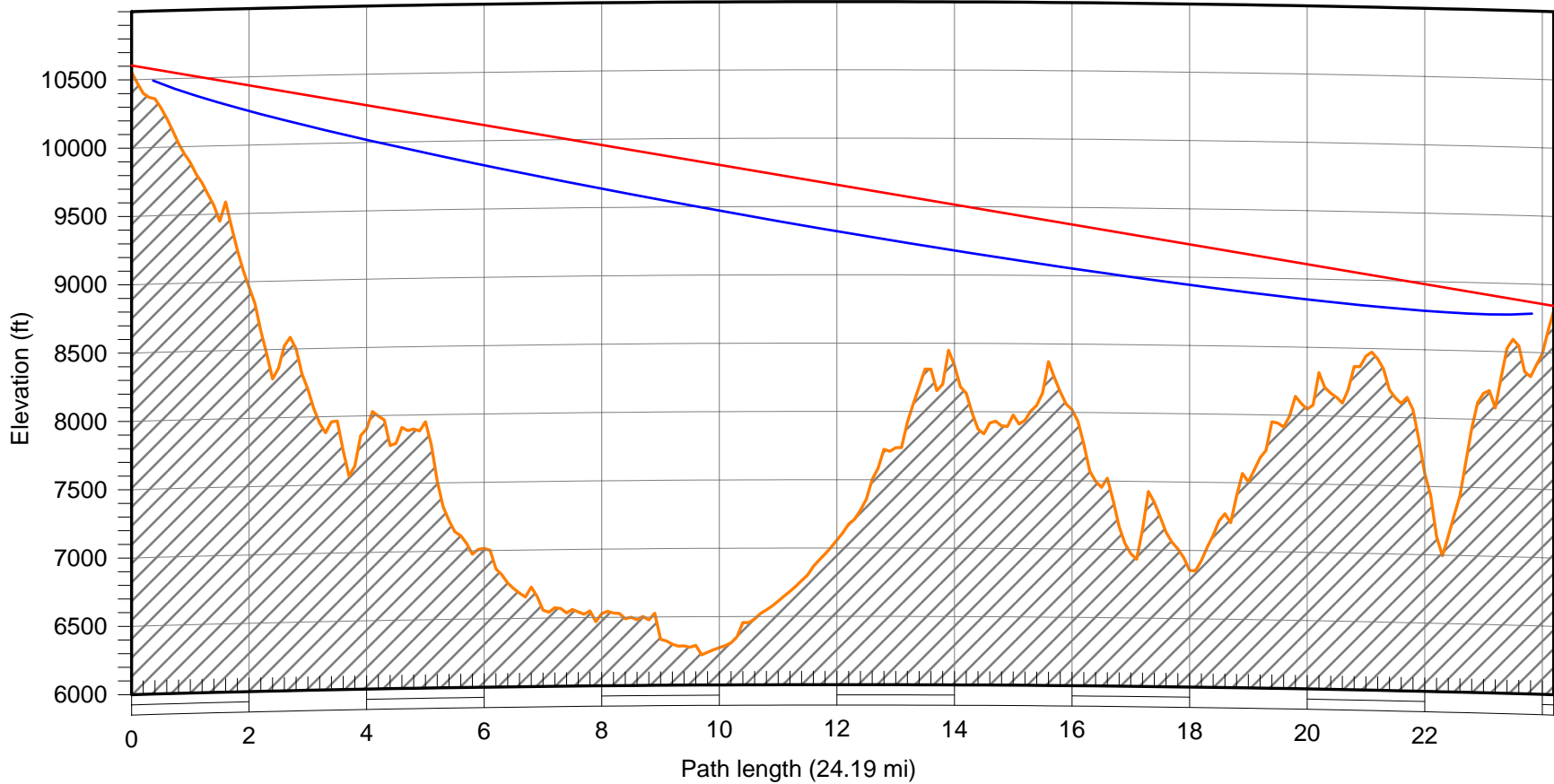
Williams UHF-TV: 60, 70 dBu = Red, Yellow, Green



Sunlight
 Latitude 39 25 23.00 N
 Longitude 107 22 34.00 W
 Azimuth 108.62°
 Elevation 10555 ft ASL
 Antenna CL 49.9 ft AGL

Frequency (MHz) = 98.0
 K = 1.33
 %F1 = 60.00

Williams
 Latitude 39 18 37.00 N
 Longitude 106 56 54.00 W
 Azimuth 288.90°
 Elevation 8806 ft ASL
 Antenna CL 40.0 ft AGL



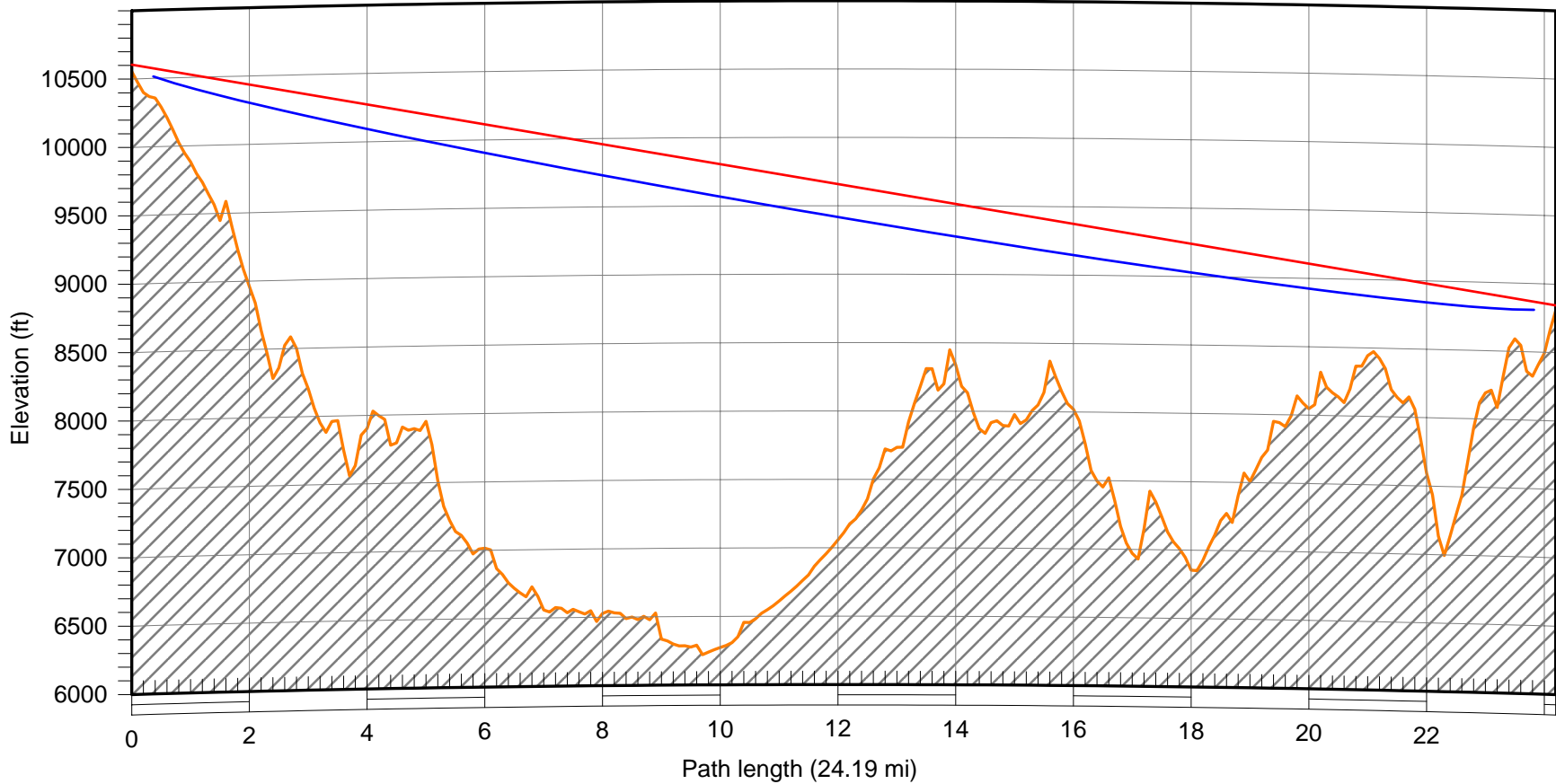
Pericle Communications Company

	Sep 01 06	
--	-----------	--

Sunlight
 Latitude 39 25 23.00 N
 Longitude 107 22 34.00 W
 Azimuth 108.62°
 Elevation 10555 ft ASL
 Antenna CL 49.9 ft AGL

Frequency (MHz) = 195.0
 K = 1.33
 %F1 = 60.00

Williams
 Latitude 39 18 37.00 N
 Longitude 106 56 54.00 W
 Azimuth 288.90°
 Elevation 8806 ft ASL
 Antenna CL 40.0 ft AGL



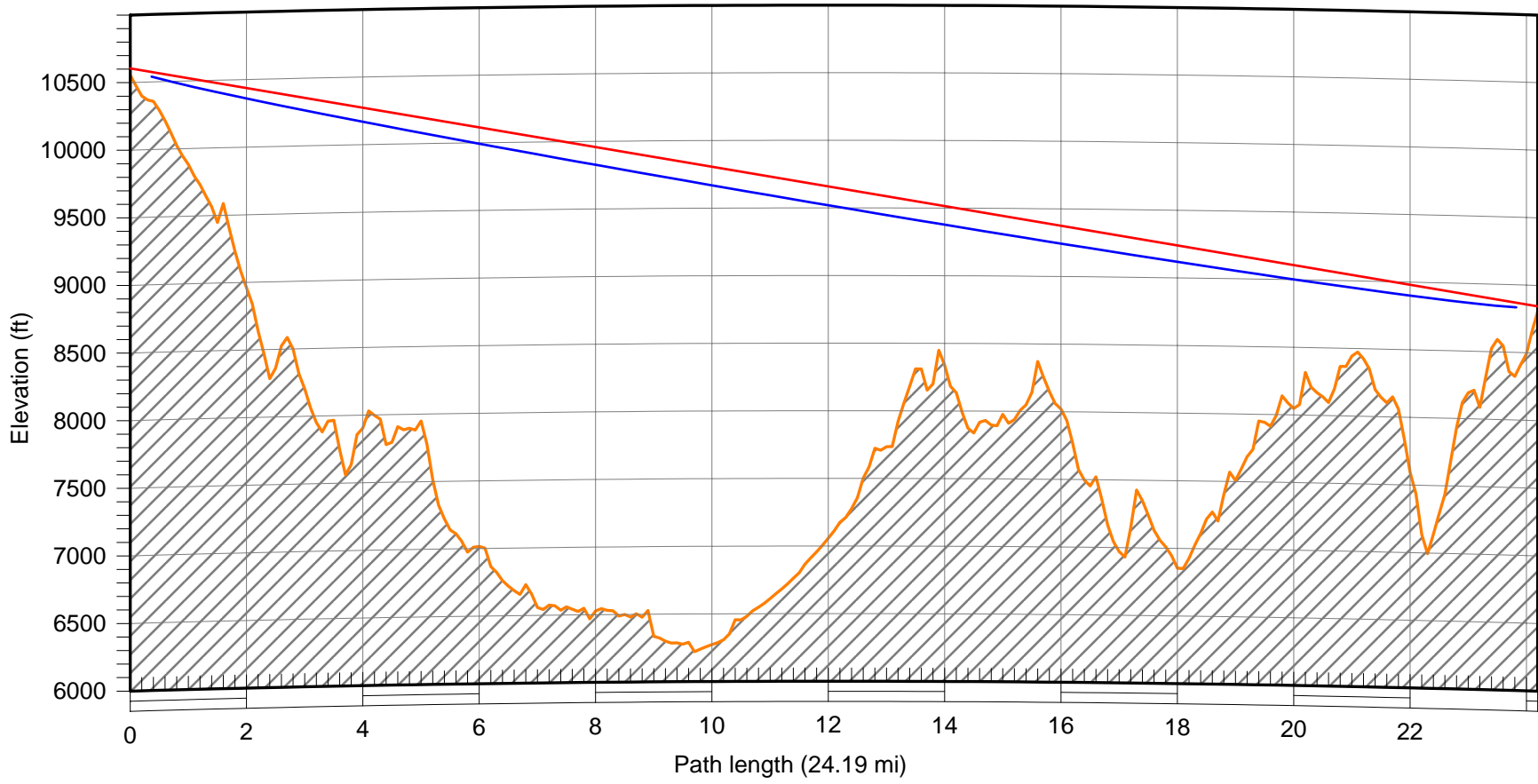
Pericle Communications Company

	Sep 01 06	

Sunlight
 Latitude 39 25 23.00 N
 Longitude 107 22 34.00 W
 Azimuth 108.62°
 Elevation 10555 ft ASL
 Antenna CL 49.9 ft AGL

Frequency (MHz) = 584.0
 K = 1.33
 %F1 = 60.00

Williams
 Latitude 39 18 37.00 N
 Longitude 106 56 54.00 W
 Azimuth 288.90°
 Elevation 8806 ft ASL
 Antenna CL 40.0 ft AGL

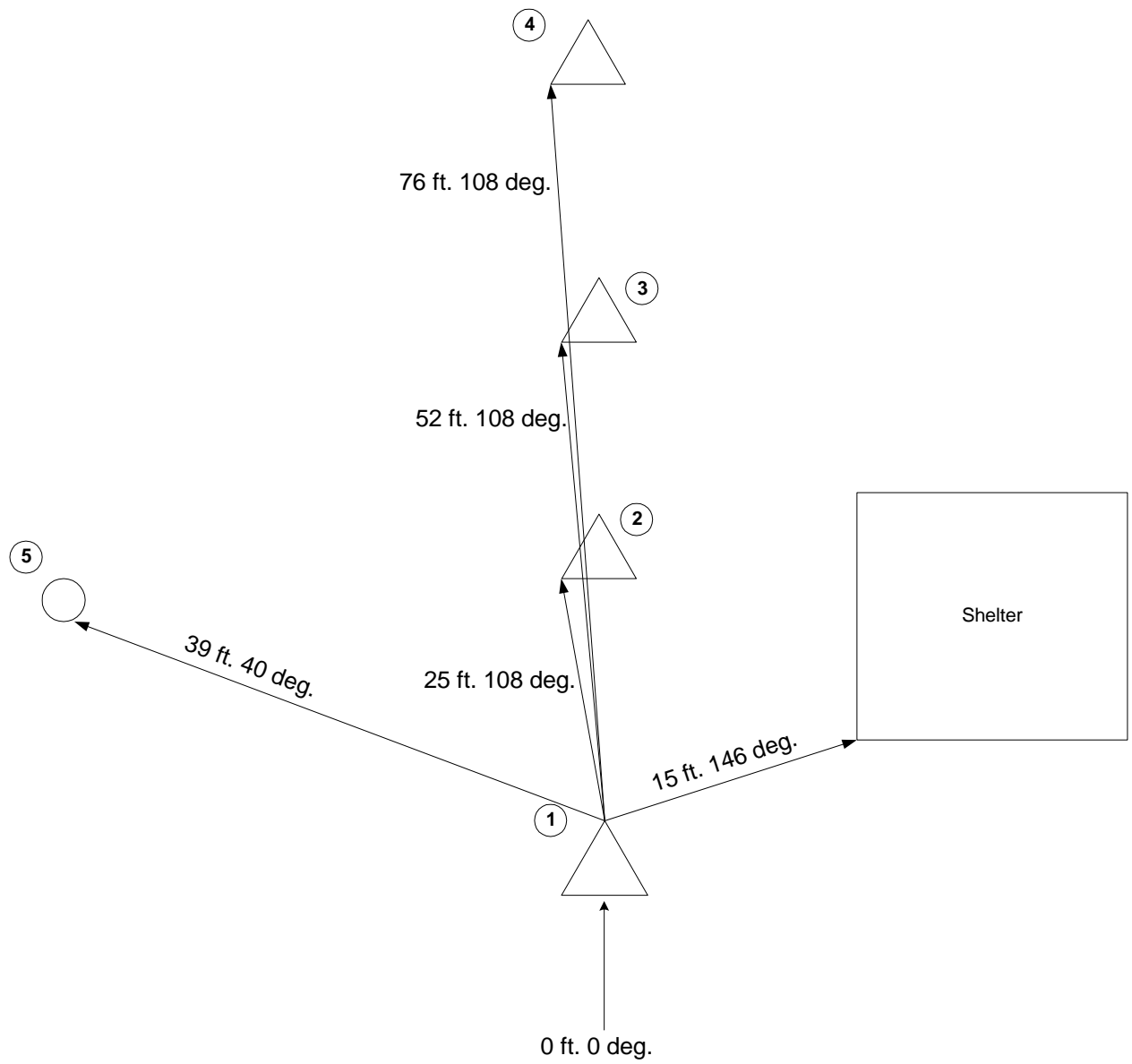


Pericle Communications Company

	Sep 01 06	



Williams Shelter
June 27, 2006

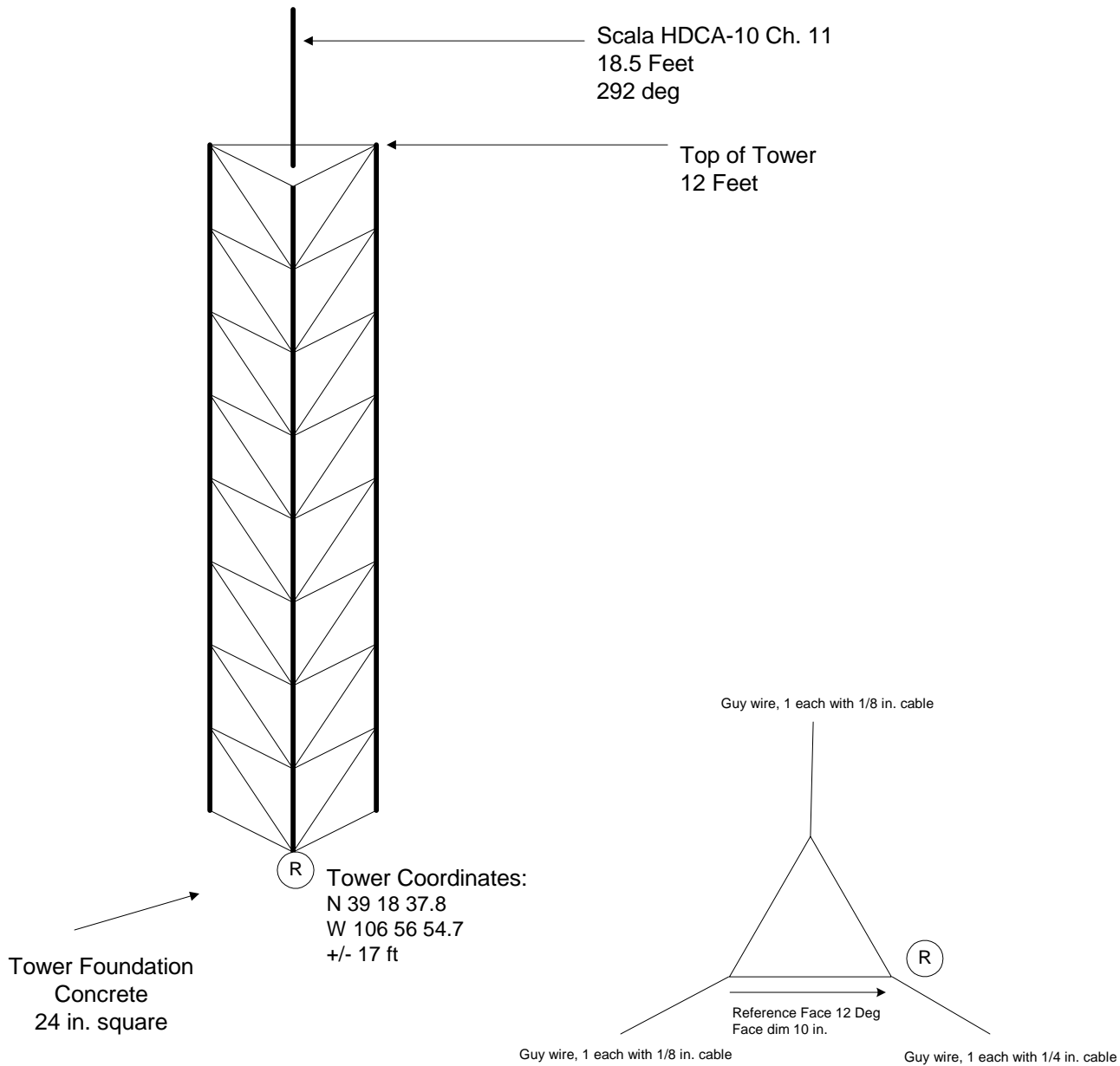


Site Diagram Williams

Williams Site Diagram.vsd



Pericle Communications Company



**Williams
Tower 1**

Williams Tower 1.vsd



Pericle Communications Company

Top of Tower
49.75 Feet

CA5-FM/HRM
41 Feet
140 deg

HDCA5 Ch13
36.75 Feet
140 deg

Scala 4DR4S Ch. 39
29.75 Feet
126 deg

Scala CA5 Ch. 89.7
25.75 Feet
136 deg

Scala 4DR4S CH50
20.75 Feet
130 deg

Scala CL900 (comms)
12 Feet
140 deg

HDCA5 Ch13
34.5 Feet
260 deg

Scala 4DR4S Ch. 39
29.75 Feet
298 deg

Scala 4DR4S CH50
20.75 Feet
260 deg

Guy wires, 1 each with 1/4 in. cable

Guy wires, 2 each with 1/8 in. cable

Reference Face 300 Deg
Face dim 12 in.

Guy wires, 1/8 in. & 1/4 in. cable

Guy wires, 2 each with 1/8 in. cable

Guy wires attached at top and 19 ft..

Tower Foundation
Concrete
24 in. square

Tower Coordinates:
N 39 18 37.7
W 106 56 54.4
+/- 18 ft

Williams
Tower 2
Williams Tower 2.vsd



Pericle Communications Company

Top of Tower
52 Feet

HDCA5
52 Feet
141 deg

HDCA5
49.5 Feet
270 deg

HDCA5 (not connected)
47 Feet
48 deg

HDCA5
44 Feet
44 deg

HDCA5 High Band TV
30 5 Feet
258 deg

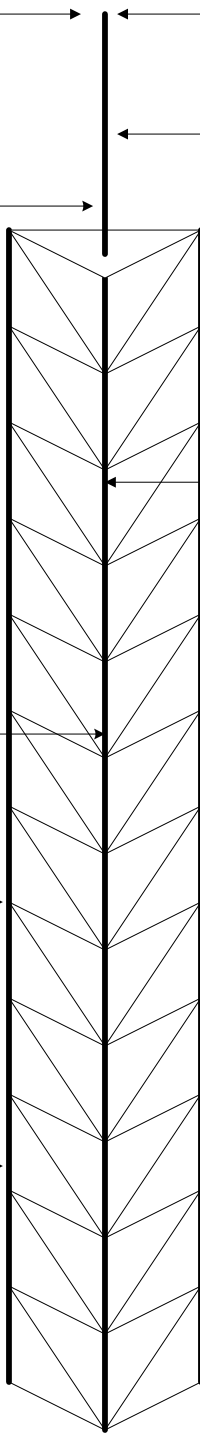
HDCA5 High Band
27 Feet
144 deg

Scala FMV 50N
21 Feet
258 deg

DB-TDD 6790A-A (comms)
19 Feet
144 deg

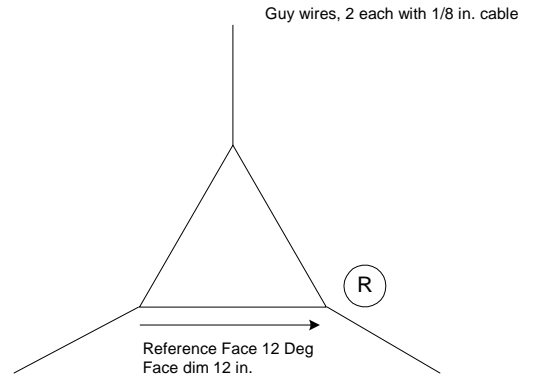
CA5 Scala 109.5
6 Feet
186 deg

Tower Foundation
Concrete
24 in. square



(R)

Tower Coordinates:
N 39 18 37.6
W 106 56 54.1
+/- 15 ft



Guy wires attached at top and 20 ft..

Williams
Tower 3
Williams Tower 3.vsd



Pericle Communications Company

Astron 32" antenna
28 Feet
Omni

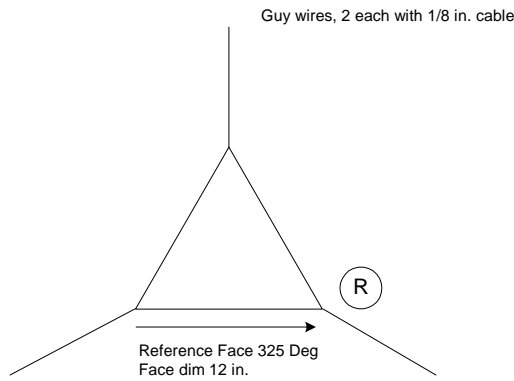
Top of Tower
28 Feet

DB 222A
12.5 Feet
Omni

Step to 10 in.

Tower Foundation
Concrete
24 in. square

Tower Coordinates:
N 39 18 37.6
W 106 56 53.8
+/- 16 ft

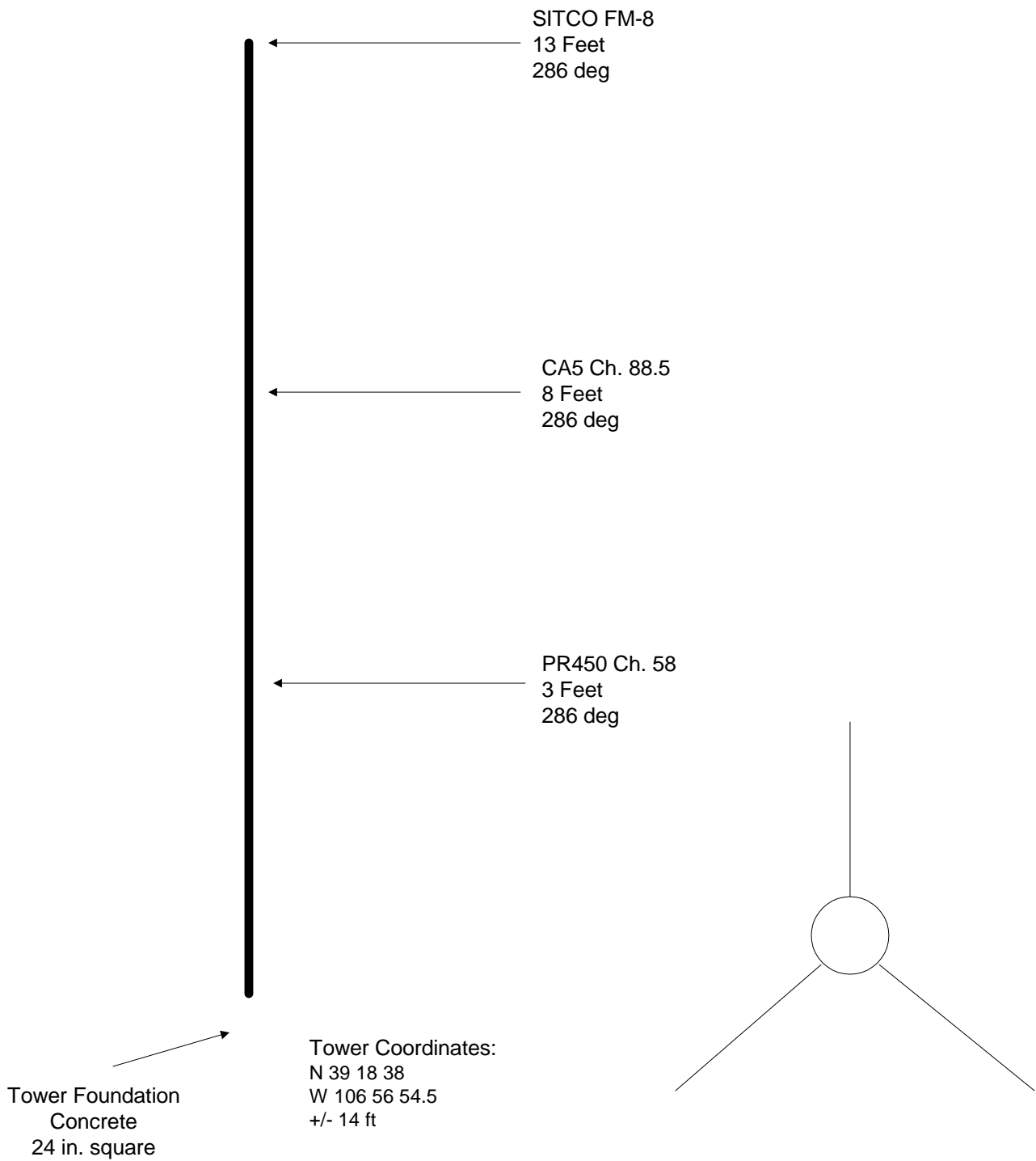


Guy wires attached at top and 18 ft..

Williams
Tower 4
Williams Tower 4.vsd



Pericle Communications Company



Williams

Tower 5

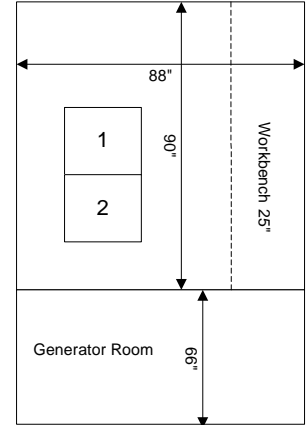
Williams Tower 5.vsd



Pericle Communications Company

Rack 1 Williams

Open 6.5 inches	1
	2
	3
	4
29 to 39, 20W Larcan TTC MX20U, Larcan L-TTC Channel Processor 7.5 inches	5
	6
	7
	8
Open - 1.75 inches	9
127.2 TX PDR1 FAA, Lee, 970-379-3628, 970-920-2865 - 3.5 inches	10
	11
Open - 1.75 inches	12
127.2 TX PDR1 FAA, Lee, 970-379-3628, 970-920-2865 - 3.5 inches	13
	14
Open - 1.75 inches	15
Bendix antenna switch for FAA. - 1.75 inches	16
	17
	18
Open 11 inches	19
	20
	21
	22
45 to 7, CADCO P-379 - 1.75 inches	23
Open 3 inches	24
	25
EMCEE Power amplifier, CH 7 5.25 inches	26
	27
	28
Open 3.5 inches	29
	30
31 to 11 Larcan TTC Ch. Proc., Ch. 11 Amp., 1.75 inches	31
	32
Larcan MX10V Ch 11 (NBC) - 10.5 inches	33
	34
	35
	36
	37
58 to 13 Larcan Ch. Processor - 1.75 inches	38
	39
Open 5.25 inches	40
	41
Ch. 13 EMCEE Power Amplifier 5.25 inches	42
	43
	44



Note: In cabinet under work bench
Basalt Fire MSR-2000 DB4048 Duplexor, 154.445 TX, 153.770 RX

Williams Rack 1

Williams Rack 1.vsd



Pericle Communications Company

Rack 2 Williams

1	Open 18 inches
2	
3	
4	
5	
6	
7	
8	
9	
10	
11	48 to 50 BDS Channel Processor 1.75 inches
12	Larcam TTC MX20U - 5.25 inches
13	
14	
15	Open - 1.75 inches
16	91.5 to 89.7 KJAX Robert A. Jones, 10W - 3.5 inches
17	
18	Open - 1.5 inches
19	95.9 to 105.5 KJYE Robert A. Jones, 10W 3.5 inches
20	
21	Open - 1.75 inches
22	90.5 to 93.9 KVOV Robert A. Jones, 10W 3.5 inches
23	
24	
25	Open 5.25 inches
26	
27	88.5 to 94.7 Larcam FMT-25 -1.75 inches
28	Open 12.5 inches
29	
30	
31	
32	
33	
34	
35	
36	Motorola MTR-2000, RX 158.730, TX 154.860 12.5 inches
37	
38	
39	
40	
41	
42	
43	
44	

Williams Rack 2

Williams Rack 2.vsd



Pericle Communications Company

Pericle Communications

Project: Pitkin County

Client : Pitin County

Site Name: Williams
 Site Coordinates:

Comment: Not again

Engineer: Dan Mieszala
 Date: 09-12-2006
 Time: 10:51:29

Run Options: All Orders
 RX Bandwidth: Receiver Dependent

Data File Name: williams.dta
 Hit File Name.: williams.H4
 Calc File Name: williams.C4

Start Order...: 1
 End Order.....: 5

ComSitePlus (tm)

INTERMODULATION HIT LIST

Page 1

NO.	ID	TX FREQ	CH LABEL	TX-TX EXCLUSION	NO.	ID	RX FREQ	CH LABEL	TX-RX EXCLUSION
1	B	94.70000	KDNK		1	B	88.10000	KDNK	
2	C	89.70000	KAJX		2	C	91.50000	KAJX	
3	E	105.50000	KJYE		3	E	95.90000	KJYE	
4	G	93.90000	KVOV		4	G	90.50000	KVOV	
5	H	687.24000	KREG CBS		5	H	675.26000	KREG CBS	
6	I	691.74000	KREG CBS Audio		6	I	679.76000	KREG CBS Audio	
7	J	211.25000	KKCO NBC		7	J	735.25000	KKCO NBC	
8	K	215.75000	KKCO NBC Audio		8	K	739.75000	KKCO NBC Audio	
9	L	175.25000	KJCT ABC		9	L	657.24000	KJCT ABC	
10	M	179.75000	KJCT ABC Audio		10	M	661.74000	KJCT ABC Audio	
11	N	621.26000	KDVR FOX		11	N	561.25000	KDVR FOX	
12	O	625.76000	KDVR FOX Audio		12	O	565.75000	KDVR FOX Audio	
13	P	199.25000	KRMJ PBS		13	P	573.26000	KRMJ PBS	
14	Q	203.75000	KRMJ PBS Audio		14	Q	577.76000	KRMJ PBS Audio	
15	AA	154.86000	Search and Resc		15	AA	158.73000	Search and Resc	
16	AB	1272.0000	FAA						
17	AC	154.44500	Basalt Fire		17	AC	153.77000	Basalt Fire	

HIT #	TRANSMITTER FREQUENCY COMBINATIONS	INTERMOD FREQUENCY	IM BW (kHz)	AFFECTED RX FREQ	DIFF (MHz)
ORDER 1 THROUGH 5 - 1 AT A TIME:					
NONE					
2nd ORDER - 2 AT A TIME:					
NONE					
3rd ORDER - 2 AT A TIME:					
NONE					
3rd ORDER - 3 AT A TIME:					
1	(1)94.70000 + (1)89.70000 + (-1)93.90000	= 90.50000	0	90.50000	0.0000
2	(1)94.70000 + (-1)691.74000 + (1)1272.0000	= 674.96000	0	675.26000	0.3000
3	(1)94.70000 + (1)621.26000 + (-1)154.86000	= 561.10000	0	561.25000	0.1500
4	(1)94.70000 + (1)621.26000 + (-1)154.44500	= 561.51500	0	561.25000	0.2650
5	(1)89.70000 + (1)687.24000 + (-1)215.75000	= 561.19000	0	561.25000	0.0600
6	(1)89.70000 + (1)687.24000 + (-1)203.75000	= 573.19000	0	573.26000	0.0700
7	(-1)89.70000 + (1)621.26000 + (1)203.75000	= 735.31000	0	735.25000	0.0600
8	(-1)89.70000 + (-1)621.26000 + (1)1272.0000	= 561.04000	0	561.25000	0.2100
9	(-1)89.70000 + (1)625.76000 + (1)199.25000	= 735.31000	0	735.25000	0.0600
10	(1)89.70000 + (1)625.76000 + (-1)154.44500	= 561.01500	0	561.25000	0.2350
11	(-1)105.50000 + (1)625.76000 + (1)154.86000	= 675.12000	0	675.26000	0.1400
12	(1)687.24000 + (-1)211.25000 + (1)199.25000	= 675.24000	0	675.26000	0.0200
13	(1)687.24000 + (-1)211.25000 + (1)203.75000	= 679.74000	0	679.76000	0.0200
14	(1)687.24000 + (-1)215.75000 + (1)203.75000	= 675.24000	0	675.26000	0.0200
15	(1)691.74000 + (-1)211.25000 + (1)199.25000	= 679.74000	0	679.76000	0.0200
16	(1)691.74000 + (-1)215.75000 + (1)199.25000	= 675.24000	0	675.26000	0.0200
17	(1)691.74000 + (-1)215.75000 + (1)203.75000	= 679.74000	0	679.76000	0.0200
18	(-1)691.74000 + (1)154.86000 + (1)1272.0000	= 735.12000	0	735.25000	0.1300
19	(1)211.25000 + (-1)175.25000 + (1)621.26000	= 657.26000	0	657.24000	0.0200
20	(1)211.25000 + (-1)175.25000 + (1)625.76000	= 661.76000	0	661.74000	0.0200
21	(1)211.25000 + (-1)179.75000 + (1)625.76000	= 657.26000	0	657.24000	0.0200
22	(1)215.75000 + (-1)175.25000 + (1)621.26000	= 661.76000	0	661.74000	0.0200
23	(1)215.75000 + (-1)179.75000 + (1)621.26000	= 657.26000	0	657.24000	0.0200
24	(1)215.75000 + (-1)179.75000 + (1)625.76000	= 661.76000	0	661.74000	0.0200
25	(1)625.76000 + (1)203.75000 + (-1)154.44500	= 675.06500	0	675.26000	0.1950
4th ORDER - 2 AT A TIME:					
26	(-2)105.50000 + (-2)175.25000	= 561.50000	0	561.25000	0.2500
4th ORDER - 3 AT A TIME:					
27	(-2)94.70000 + (1)691.74000 + (1)154.86000	= 657.20000	0	657.24000	0.0400
28	(1)94.70000 + (2)203.75000 + (1)154.86000	= 657.06000	0	657.24000	0.1800
29	(-2)105.50000 + (1)687.24000 + (1)199.25000	= 675.49000	0	675.26000	0.2300
30	(-1)105.50000 + (-2)215.75000 + (1)1272.0000	= 735.00000	0	735.25000	0.2500
31	(2)105.50000 + (-1)175.25000 + (1)621.26000	= 657.01000	0	657.24000	0.2300
32	(2)105.50000 + (-1)179.75000 + (1)625.76000	= 657.01000	0	657.24000	0.2300
33	(-1)93.90000 + (-2)215.75000 + (1)621.26000	= 95.86000	0	95.90000	0.0400
34	(1)93.90000 + (2)179.75000 + (1)203.75000	= 657.15000	0	657.24000	0.0900

HIT #	TRANSMITTER	FREQUENCY	COMBINATIONS	INTERMOD FREQUENCY	IM BW (kHz)	AFFECTED RX FREQ	DIFF (MHz)	
35		(-1)93.90000	+ (2)203.75000	+ (-1)154.86000	= 158.74000	0	158.73000	0.0100
36		(2)687.24000	+ (-1)175.25000	+ (-1)625.76000	= 573.47000	0	573.26000	0.2100
37		(-1)687.24000	+ (1)179.75000	+ (2)621.26000	= 735.03000	0	735.25000	0.2200
38		(2)687.24000	+ (-1)179.75000	+ (-1)621.26000	= 573.47000	0	573.26000	0.2100
39		(-1)691.74000	+ (1)175.25000	+ (2)625.76000	= 735.03000	0	735.25000	0.2200
40		(1)211.25000	+ (1)154.86000	+ (2)154.44500	= 675.00000	0	675.26000	0.2600
41		(1)211.25000	+ (2)154.86000	+ (1)154.44500	= 675.41500	0	675.26000	0.1550
42		(1)625.76000	+ (-1)199.25000	+ (2)154.44500	= 735.40000	0	735.25000	0.1500
5th ORDER - 2 AT A TIME:								
NONE								
5th ORDER - 3 AT A TIME:								
43		(-2)94.70000	+ (1)89.70000	+ (2)93.90000	= 88.10000	0	88.10000	0.0000
44		(3)94.70000	+ (1)89.70000	+ (1)199.25000	= 573.05000	0	573.26000	0.2100
45		(3)94.70000	+ (1)211.25000	+ (1)179.75000	= 675.10000	0	675.26000	0.1600
46		(-1)94.70000	+ (2)211.25000	+ (2)203.75000	= 735.30000	0	735.25000	0.0500
47		(3)94.70000	+ (1)215.75000	+ (1)175.25000	= 675.10000	0	675.26000	0.1600
48		(-1)94.70000	+ (2)215.75000	+ (2)199.25000	= 735.30000	0	735.25000	0.0500
49		(-1)94.70000	+ (3)199.25000	+ (1)154.44500	= 657.49500	0	657.24000	0.2550
50		(-2)94.70000	+ (-2)203.75000	+ (1)1272.0000	= 675.10000	0	675.26000	0.1600
51		(-2)89.70000	+ (2)105.50000	+ (1)625.76000	= 657.36000	0	657.24000	0.1200
52		(1)89.70000	+ (3)105.50000	+ (1)154.86000	= 561.06000	0	561.25000	0.1900
53		(-3)89.70000	+ (1)687.24000	+ (1)154.86000	= 573.00000	0	573.26000	0.2600
54		(2)89.70000	+ (1)691.74000	+ (-2)154.86000	= 561.42000	0	561.25000	0.1700
55		(-2)89.70000	+ (-2)175.25000	+ (1)625.76000	= 95.86000	0	95.90000	0.0400
56		(3)89.70000	+ (1)621.26000	+ (-1)154.86000	= 735.50000	0	735.25000	0.2500
57		(1)89.70000	+ (2)154.86000	+ (-2)154.44500	= 90.53000	0	90.50000	0.0300
58		(1)105.50000	+ (-2)211.25000	+ (2)203.75000	= 90.50000	0	90.50000	0.0000
59		(1)105.50000	+ (3)215.75000	+ (-1)179.75000	= 573.00000	0	573.26000	0.2600
60		(-3)105.50000	+ (-1)215.75000	+ (1)1272.0000	= 739.75000	0	739.75000	0.0000
61		(3)105.50000	+ (1)203.75000	+ (1)154.86000	= 675.11000	0	675.26000	0.1500
62		(2)105.50000	+ (2)154.86000	+ (1)154.44500	= 675.16500	0	675.26000	0.0950
63		(-1)93.90000	+ (-2)211.25000	+ (2)625.76000	= 735.12000	0	735.25000	0.1300
64		(-2)93.90000	+ (-2)211.25000	+ (1)1272.0000	= 661.70000	0	661.74000	0.0400
65		(1)93.90000	+ (3)211.25000	+ (-1)154.44500	= 573.20500	0	573.26000	0.0550
66		(1)93.90000	+ (3)215.75000	+ (-1)179.75000	= 561.40000	0	561.25000	0.1500
67		(-1)93.90000	+ (1)203.75000	+ (3)154.44500	= 573.18500	0	573.26000	0.0750
68		(1)687.24000	+ (-2)175.25000	+ (2)199.25000	= 735.24000	0	735.25000	0.0100
69		(1)687.24000	+ (-2)179.75000	+ (2)203.75000	= 735.24000	0	735.25000	0.0100
70		(1)691.74000	+ (-2)175.25000	+ (2)199.25000	= 739.74000	0	739.75000	0.0100
71		(1)691.74000	+ (-2)179.75000	+ (2)203.75000	= 739.74000	0	739.75000	0.0100
72		(2)211.25000	+ (2)203.75000	+ (-1)154.86000	= 675.14000	0	675.26000	0.1200
73		(2)211.25000	+ (2)203.75000	+ (-1)154.44500	= 675.55500	0	675.26000	0.2950

HIT #	TRANSMITTER FREQUENCY COMBINATIONS	INTERMOD FREQUENCY	IM BW (kHz)	AFFECTED RX FREQ	DIFF (MHz)
74	(-3)215.75000 + (1)175.25000 + (1)625.76000	= 153.76000	0	153.77000	0.0100
75	(-3)215.75000 + (1)179.75000 + (1)621.26000	= 153.76000	0	153.77000	0.0100
76	(2)215.75000 + (-1)179.75000 + (2)154.86000	= 561.47000	0	561.25000	0.2200
77	(2)215.75000 + (2)199.25000 + (-1)154.86000	= 675.14000	0	675.26000	0.1200
78	(2)215.75000 + (2)199.25000 + (-1)154.44500	= 675.55500	0	675.26000	0.2950
79	(2)175.25000 + (1)621.26000 + (-2)199.25000	= 573.26000	0	573.26000	0.0000
80	(2)175.25000 + (1)625.76000 + (-2)199.25000	= 577.76000	0	577.76000	0.0000
81	(2)179.75000 + (1)621.26000 + (-2)203.75000	= 573.26000	0	573.26000	0.0000
82	(2)179.75000 + (1)625.76000 + (-2)203.75000	= 577.76000	0	577.76000	0.0000
83	(2)179.75000 + (1)625.76000 + (-2)154.86000	= 675.54000	0	675.26000	0.2800
84	(-1)625.76000 + (2)203.75000 + (2)154.86000	= 91.46000	0	91.50000	0.0400
85	(2)203.75000 + (-1)154.86000 + (2)154.44500	= 561.53000	0	561.25000	0.2800