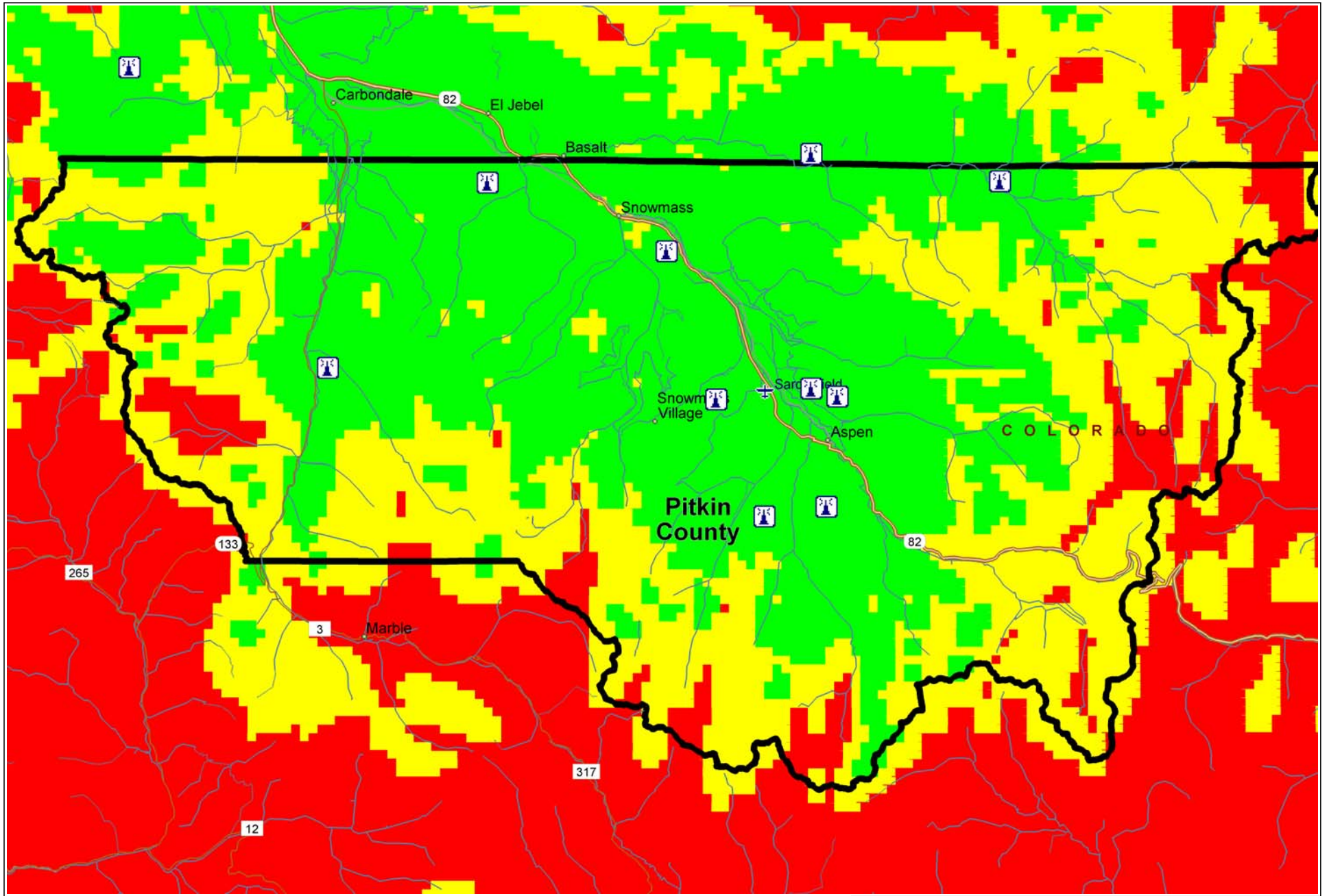
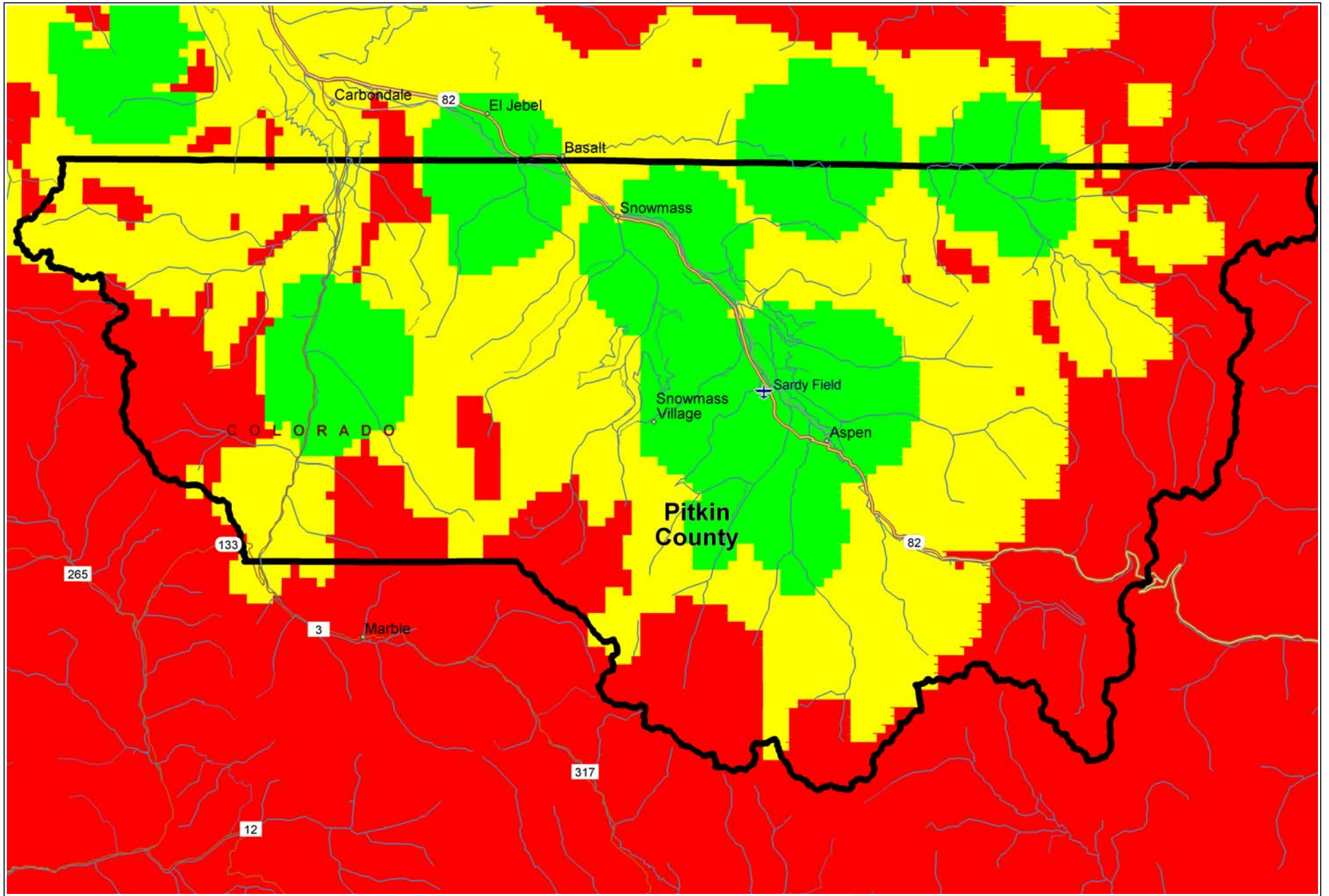


**Appendix B - Composite Coverage From Ten Translator Sites**  
(See Appendix A for an explanation of the assumptions behind these coverage maps.)

Combined FM: 40, 50 dBu = Red, Yellow, Green

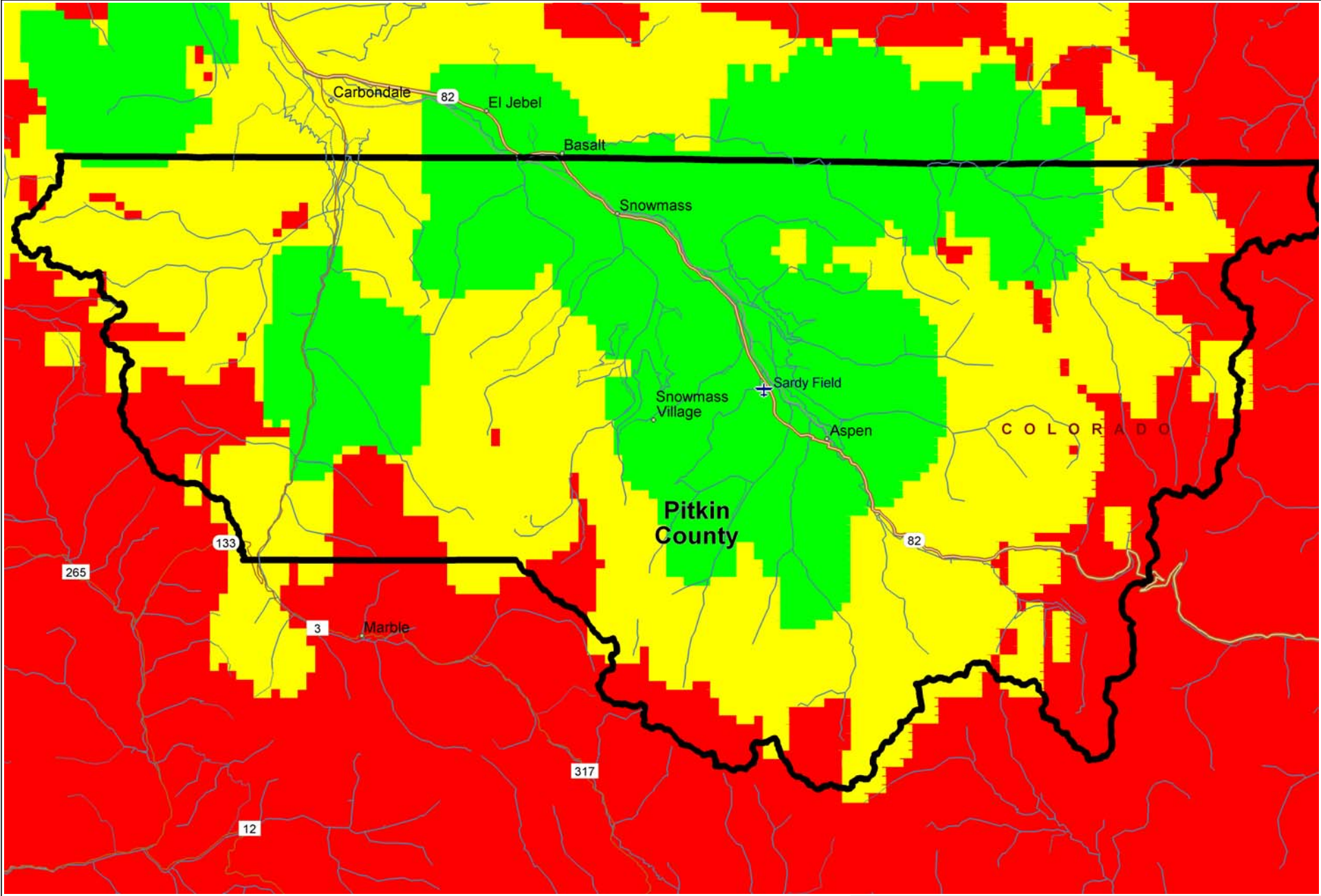


Pitkin County Combined VHF-TV: 60, 70 dBu = Red, Yellow, Green





Pitkin County Combined UHF-TV: 60, 70 dBu = Red, Yellow, Green



0 mi 5 10 15 20

Copyright © 1988-2003 Microsoft Corp. and/or its suppliers. All rights reserved. <http://www.microsoft.com/mappoint>  
© Copyright 2002 by Geographic Data Technology, Inc. All rights reserved. © 2002 Navigation Technologies. All rights reserved. This data includes information taken with permission from Canadian authorities © 1991-2002 Government of Canada (Statistics Canada and/or Geomatics Canada), all rights reserved.